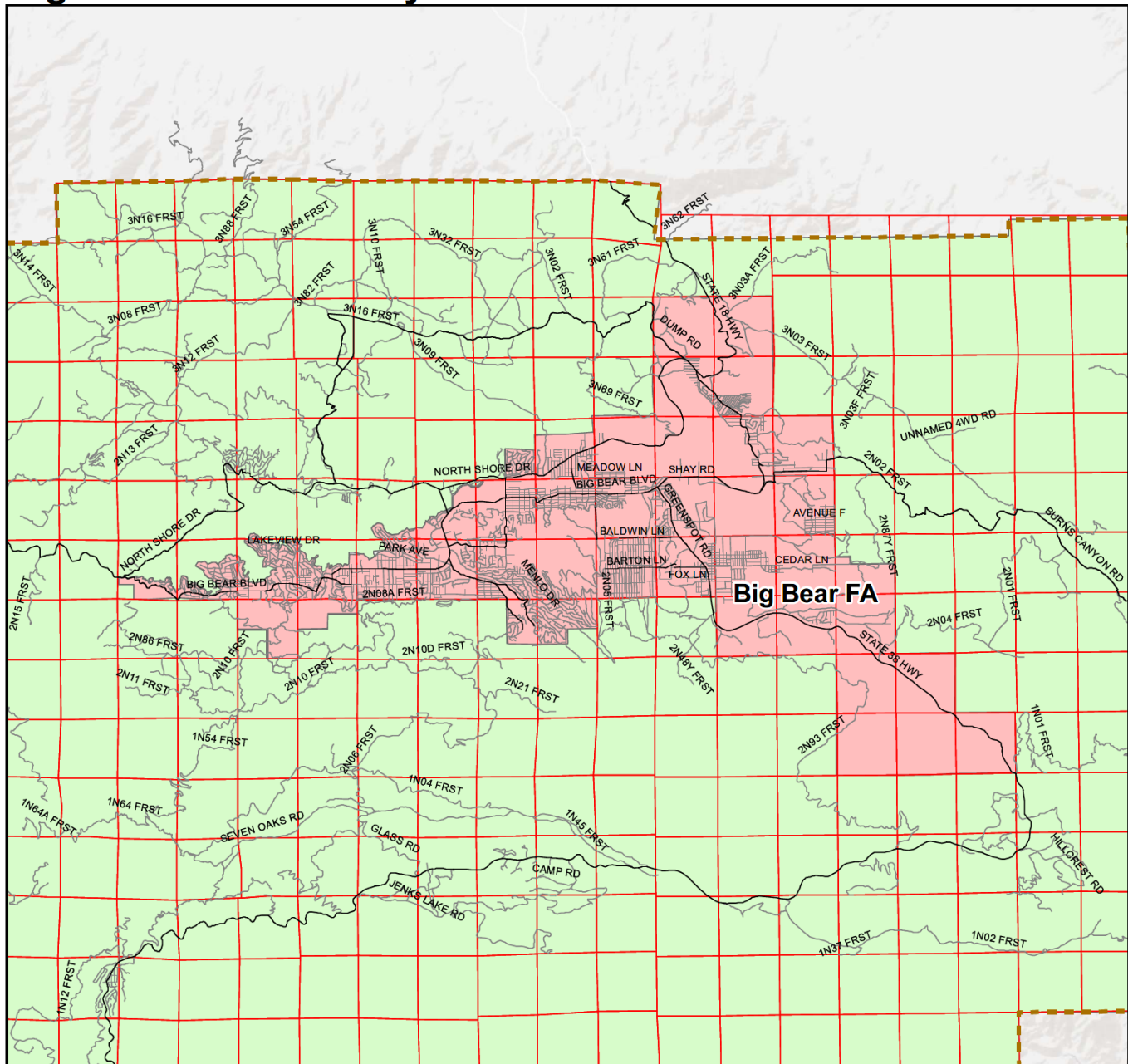



Big Bear Fire Authority



Principal Act	California Government Code §6502	Year Formed	2012	Governance	Board of Directors
Area	36.3 sq mi	Population	19,103 (2019)	Website	www.bigbearfire.com
LAFCO Fiscal Indicators	http://www.sbclafco.org/FiscalIndicators/JPA/BigBearFireAuthority.aspx				
LAFCO Service Reviews					
Round 1, by agency	http://www.sbclafco.org/Proposals/ServiceReviews/MountainRegion.aspx				
Round 2, water	N/A				
Round 2, sewer	N/A				




 Disclaimer: The information shown is intended to be used for general display only and is not to be used as an official map.
 Agency service area shown, not jurisdiction boundary